

Reed Switch Standard & Miniature Switches

- Controlled switching environment.
- Low contact resistance variants.
- High power applications.
- High voltage.

A family of form 'A' reed switches produced with Rhodium contact material, designed to range from moderate currents and voltages through to high voltage, high current switching.



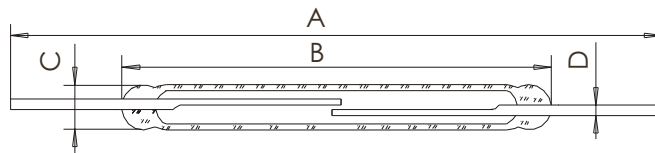
Parameters	Type	Standard size Normally Open						Miniature
		Standard	High Power			High Voltage		MRA560G
		DRA200G	DRA282G	DRA283	DRA500H	DTA500H	DTA810H	
Contact form		A	A	A	A	A	A	A
Contact material		Rh	Rh	Rh	Rh	T	T	Rh
Switching capacity	max. W/VA	80	120	250	25	50	50	100
Switching voltage	max. V AC/DC	250	250	250	500	1000	7500	1000
Switching current	max. A	1.3	*3.0	*5.0	1.5	2.5	3.0	1.0
Carrying current	max. A	2.0	5.0	5.0	-	-	-	2.5
Dielectric strength	min. VDC	800	800	575	2500	2500	10000	1500
Initial Contact resistance	max. mOhms	80	80	100	100	100	100	100
Insulation resistance	min. Ohms	10 ¹¹	10 ¹¹	10 ¹⁰	10 ⁸	10 ⁸	10 ¹⁰	10 ¹⁰
Operate sensitivity	range AT	75 ... 95	75 ... 95	60 ... 120	60 ... 100	60 ... 100	100 ... 150	20...40
Release sensitivity	min. AT	25	33.5	-	16	25	46	5
Operate time including bounce	max. ms	4.0	3.5	5.0	3.0	3.0	3.0	1.1
Bounce time	max. ms	0.5	0.5	1.0	0.5	0.5	1.0	0.5
Release time	max. ms	0.20	0.20	0.2	1.5	1.5	1.0	0.05
Resonant frequency	typ. Hz	900	900	900	-	-	-	2500
Operating frequency	max. Hz	100	100	-	-	-	-	500
Vibration	35 g Hz	500	500	-	-	-	-	2000
Shock	11 ms g	50	50	-	-	-	-	30
Capacitance	typ. pF	0.8	0.8	0.6	0.8	1.5	1.0	0.5
Operating temperature range	°C	-40...+150			0/+125			-40...+150

Dimensions

Overall length	A max.	mm	79	79	84	82	82	82	56
Glass length	B max.	mm	52	52	51	51	51	54	21
Glass diameter	C max.	mm	5.4	5.4	5.4	5.5	5.5	†5.5	2.8
Wire diameter	D nom.	mm	2.5x0.5	2.5x0.5	2.5x0.5	2.5x0.5	2.5x0.5	2.5x0.5	0.60

* Reduced life at high current.

† Plus Glass Pip 5.9 max.



CONTACT US NOW

UNITED KINGDOM

CRYDOM

T +44 (0) 1202 897969

F +44 (0) 1202 891918

E magnetics@crydom.com

W www.crydom.co.uk

USA

CRYDOM

T +1 619 210 1600

F +1 619 710 8540

E sales@crydom.com

W www.crydom.com

standard & miniature
Reed Switches

