

## Reed Switch Changeover Switches

- Changeover or normally closed application.
- Inert gas atmosphere.

A family of form 'C' reed switches offers moderate to medium voltage breakdown.

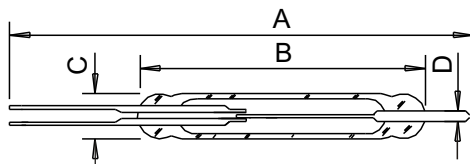


Parameters	Type	Compact Change Over			Tiny Change Over	
		Standard	High Power		TRC200B	TRC200S
		CRC200H	CRC500H	CTC500H		
Contact form		C	C	C	C	C
Contact material		Rh	Rh	T	Rh	Rh
Switching capacity	max. W/VA	25	25	100#	5	5
Switching voltage	max. V AC/DC	150	250	500	175	175
Switching current	max. A	1.0	1.0	3.0	0.25	0.25
Carrying current	max. A	-	-	-	0.5	0.5
Dielectric strength	min. VDC	250	1000	1000	200	200
Initial contact resistance	max. mohms	100	100	500	100	100
Insulation resistance	min. ohms	10 <sup>10</sup>	10 <sup>8</sup>	10 <sup>8</sup>	10 <sup>9</sup>	10 <sup>9</sup>
Operate sensitivity	range AT	40 ... 80	50 ... 90	60 ... 100	15 ... 30	15 ... 30
Release sensitivity	min. AT	10	30	32	-	-
Operate time						
without bounce	max. ms	3.0	3.0	3.5	0.7	0.7
Bounce time	max. ms	1.0	1.0	1.5	-	-
Release time	max. ms	2.0	1.0	1.0	1.0	1.0
Resonant frequency	typ. Hz	-	-	-	11000	11000
Operating frequency	max. Hz	-	-	-	-	-
Vibration	35 g Hz	-	-	-	30g@50-2k Hz	30g@50-2k Hz
Shock	11 ms g	-	-	-	50	50
Capacitance	typ. pF	2.0	2.0	-	-	-
Operating temperature range	°C	-40...+150	0/+125		-40/+125	

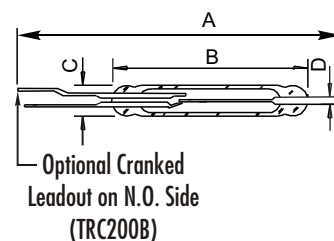
### Dimensions

Overall length	A max.	mm	87	87	87	53	53
Glass length	B max.	mm	35	35	35	14.8	14.8
Glass diameter	C max.	mm	5.4	5.4	5.4	2.7	2.7
Wire diameter	D max.	mm	1.0	1.0	1.0	0.51	0.51

### Compact Change Over



### Tiny Change Over



changeover  
Reed Switches



### CONTACT US NOW

UNITED KINGDOM

CRYDOM

T +44 (0) 1202 897969

F +44 (0) 1202 891918

E [magnetics@crydom.com](mailto:magnetics@crydom.com)

W [www.crydom.co.uk](http://www.crydom.co.uk)

USA

CRYDOM

T +1 619 210 1600

F +1 619 710 8540

E [sales@crydom.com](mailto:sales@crydom.com)

W [www.crydom.com](http://www.crydom.com)